

How to make a perfect impression!

With a XL product in **Bottles** (F30 XL, F50 XL, etc.)

1a Mix for 30 seconds *

For 850ml cans, turn each can over by hand several times. Stir each component before each use.



1b Mix for 30 seconds *

For 5L cans, use the **included mixers** and mix each component **individually**. **Do not use the same mixer for both components.**



Clean mixers with **White Gas** after **each use**.

2 Degrease the part

It's **mandatory!** Grease prevents polymerization and impair precision. Use the DNI Kristal or a validated product. Consult us.



3 Prepare the mixture

Big volumes are supplied in 2-component cans. Mix them in **equal quantities** in a jar (1:1 volume).



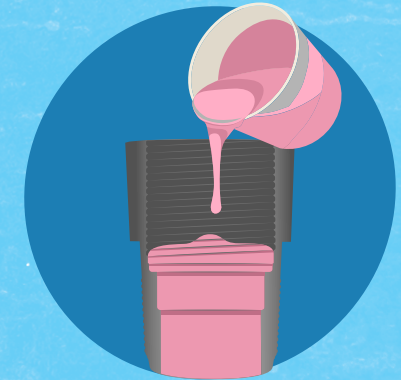
4 Mix the products

Using a spatula, manually mix the products in the container you poured them into.



5 Pour the product

Pour the product into the mold, taking care to **avoid air bubbles**. Use the spatula to work the product into the grooves if necessary.



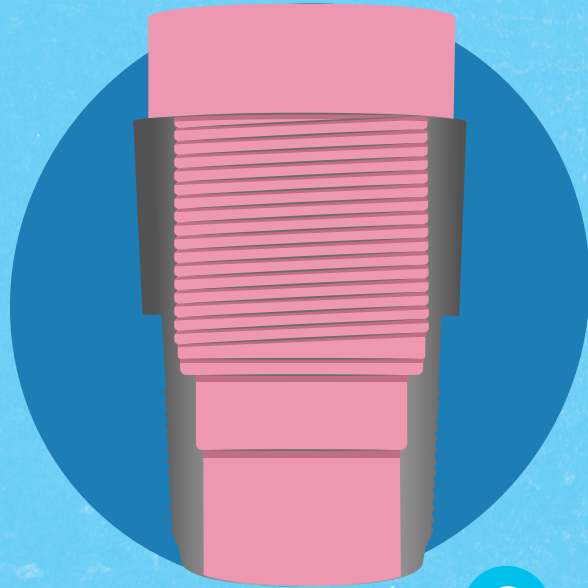
* The purpose of this operation is to homogenize the product and avoid phase shifting of the components. **Take care not to create too many bubbles.**

Next ...

The impression has a μm resolution !

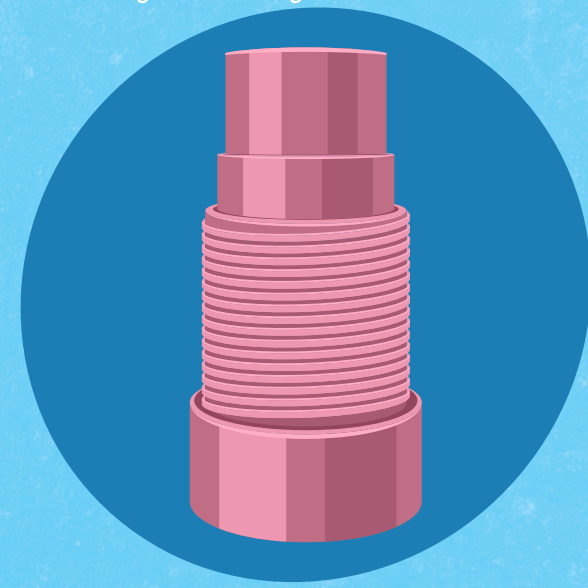
6 Create a grip

To facilitate the extraction, create a grip of several centimetres using Plastin or a removal ring.



7 Impression removal

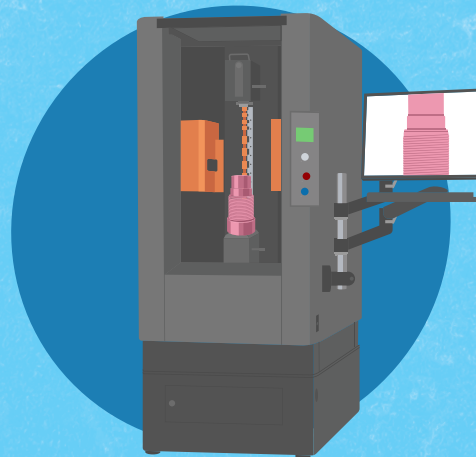
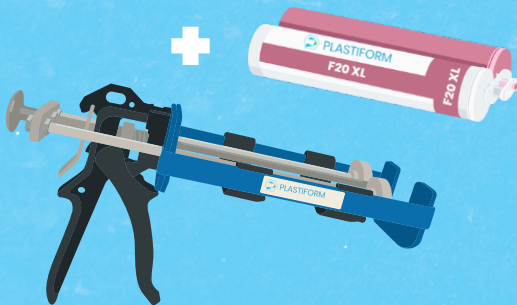
The curing time is indicated on the Data Sheet. Make sure that the impression is fully polymerized before removing it. Pull the impression straight out, without twisting or unscrewing it.



8 Measuring the part

After extracting the impression, use a measuring system to control it.

XL Plastiforms are also available in 400ml cartridge format.



Available in 1.7L or 10L cans



Consult the technical data sheet and instructions for use before use!